

DAILY RESEARCH, 14 AGUSTUS 2020

PT PROFINDO SEKURITAS INDONESIA

**GD PERMATA KUNINGAN LT 19
JL KUNINGAN MULIA KAV 9C GUNTUR SETIABUDI JAKARTA SELATAN 12980**

TELP +62 21 8378 0888

EMAIL : CUSTOMERSERVICE@PROFINDO.COM

WWW.PROFINDO.COM | PROCLICK.PROFINDO.COM

MARKET MOVERS



Bursa saham AS ditutup mixed setelah rilis data pengangguran AS yang menurun. Selain itu investor masih menanti paket stimulus AS yang belum mencapai kesepakatan pada Kongres. **DOW -0.29%, S&P -0.20%, NASDAQ +0,27%**

Bursa saham Eropa ditutup melemah setelah belum tercapainya kesepakatan Stimulus AS pada Kongres dan juga kecemasan akan terjadinya perang Dagang di zona Eropa. **Indeks DAX -0.50%, FTSE -1.50%, CAC -0.61%**

Bursa Saham Asia dibuka mixed dimana investor masih menanti rilis data Ekonomi China. **Hang Seng -0.05%, KOSPI -2.00%, Nikkei -0.10%**

Harga minyak mentah dunia melemah seiring masih melemahnya permintaan Global. Harga emas menguat kelevel 1960an setelah masih belum jelasnya tanda-tanda pemulihan ekonomi global. **WTI +0.28%, Brent Oil +0.11%, Gold -0.23%.**

IHSG pada perdagangan hari ini diperkirakan akan **BEARISH** dengan Range pergerakan **5180-5278** dengan saham-saham yang dapat diperhatikan : **KRAS MYOR SIMP MIKA ITMG EXCL**

MARET DATA

AMERIKA

DOW 30	27,896.72	-80.12	-0.29%
S&P 500	3,373.43	-6.92	-0.20%
NASDAQ	11,042.50	+30.27	+0.27%

EUROPE

DAX	12,993.71	-64.92	-0.50%
FTSE 100	6,185.62	-94.50	-1.50%
CAC 40	5,042.38	-30.93	-0.61%

ASIA

SHANGHAI	3,320.21	-0.52	-0.02%
HANGSENG	25,230.67	-13.35	-0.05%
SET	1,346.69	+9.85	+0.74%
KOSPI	2,388.79	-48.74	-2.00%
JCI	5,239.25	+5.80	+0.11%
NIKKEI	23,226.00	-23.61	-0.10%
ASX	6,103.20	+12.20	+0.20%

COMMODITIES

GOLD	1,965.90	-4.50	-0.23%
WTI OIL	42.36	+0.12	+0.28%
BRENT OIL	45.11	+0.05	+0.11%
COAL	50.50	+0.45	+0.90%
PALM OIL	2900	+20	+0.69%
TINS	17,515.00	-22.50	-0.13%
NICKEL	14,250.00	+210.00	+1.50%

EVENT & ECONOMIC CALENDER



ECONOMIC CALENDER :

INDONESIA

100820 CURRENT ACCOUNT Q2
110820 RETAIL SALES YoY (JUN)

GLOBAL

100820 CHINA INFLATION RATE YoY (JUL)
CHINA PPI YoY (JUL)
US JOBS OPENING (JUN)
110820 JAPAN CURRENT ACCOUNT (JUN)
JAPAN BANK LENDING YoY (JUL)
US PPI MoM (JUL)
US CORE PPI YoY (JUL)
120820 US API CRUDE OIL CHANGE
GBP TRADE BALANCE (JUN)
GBP GDP GROWTH RATE YoY (Q2)
GBP MANUFACTURING PRODUCTIONS (JUN)
EUROPE INDUSTRIAL PRODUCTION (JUN)
US CORE INFLATION
CHINA FDI (YTD) JUL
130820 JAPAN PPI MoM (JUL)
GERMANY INFLATION RATE YoY (JUL)
SPAIN INFLATION RATE YoY (JUL)
US JOBS CLAIMS
140820 CHINA INDUSTRIAL PRODUCTION YoY (JUL)
CHINA RETAIL SALES YoY (JUL)
CHINA UNEMPLOYMENT RATE YoY (JUL)
KOREA EXPORT IMPORT YoY (JUL)
FRANCE INFLATION RATE (JUL)
EUROPE GDP GROWTH Q2
EUROPE TRADE BALANCE (JUN)
US RETAIL SALES MoM (JUL)
US MANUFACTURING PRODUCTIONS YoY (JUL)

CORPORATE ACTION :

DEVIDEN

100820 TPMA RP 23.5 (CUM 1008, PAYMENT 0309)
SLIS RP 0.75 (CUM 1008, PAYMENT 0309)
IFII RP 2 (CUM 1008, PAYMENT 0209)
CTRA RP 8 (CUM 1008, PAYMENT 0309)
130820 SMBR RP 0.62007 (CUM 1308, PAYMENT 0409)
ACES RP 18.1 (CUM 1308, PAYMENT 0409)

RUPS

100820 PTSN OPMS INPC ECII BESS ASJT
110820 RISE RDTX PORT MARK KPIG BMTR APLI
120820 TNCA SMRA SMMT SCMA OCAP MREI MPOW MOLI HRTA HERO GEMS
FAST EMTK BWPT BBLD AKSI
130820 WICO TARA SDRA PTIS MORE OKAS LMSH LION LEAD JAST HOTL GSMF
DEWA CSIS BHAT BAYU ALTO ALDO
140820 YPAS WOOD TBLA SWAT SONA RALS PYFA PTSP MIRA MICE MGNA MFIN
GJTL GGRP FREN CBMF BUDI BTEK BKDP BEST ALKA

IPO

100820 SGER – PT SUMBER GLOBAL ENERGY TBK RP 108

RIGTH ISSUE

IMJS RATIO 1:2 RP 230 (CUM 1008, TRADING PERIOD 1408-2508)

JAKARTA COMPOSITE INDEX



PREVIOUS 13 AGUSTUS 2020

CLOSING	5239.250	+0.111%
TRANSACTION	IDR 10.636 TRILLION	
FOREIGN NETT	IDR 281 BIO (BUY)	

PREDICTION 14 AGUSTUS 2020

BEARISH
RANGE 5180-5278

SHOOTING STAR
STOCHASTIC : OVERBOUGHT
MACD : HISTOGRAM POSITIF DAN UPTREND

TECHNICAL RECOMENDATION



KRAS – PT KRAKATAU STEEL (PERSERO) TBK

CLOSING 13/8/2020 RP 376 (+1.1%)

**SELL ON STRENGTH
TAKE PROFIT 388**

DOJI
STOCHASTIC : OVERSOLD
MACD : HISTOGRAM NEGATIF MENGECIL DAN
DOWNTREND

TECHNICAL RECOMENDATION



MYOR – PT MAYORA INDAH TBK

CLOSING 13/8/2020 RP 2280 (+1.3%)

BUY

TARGET PRICE 2370

STOPLOSS < 2250

BREAK OUT TRIANGLE

STOCHASTIC : GOLDEN CROSS

MACD : HISTOGRAM NEGATIF MENGECIL DAN BERSIAP GOLDEN CROSS

TECHNICAL RECOMENDATION



SIMP – PT SALIM IVOMAS PRATAMA TBK

CLOSING 13/8/2020 RP 322 (+1.9%)

BUY

TARGET PRICE 358

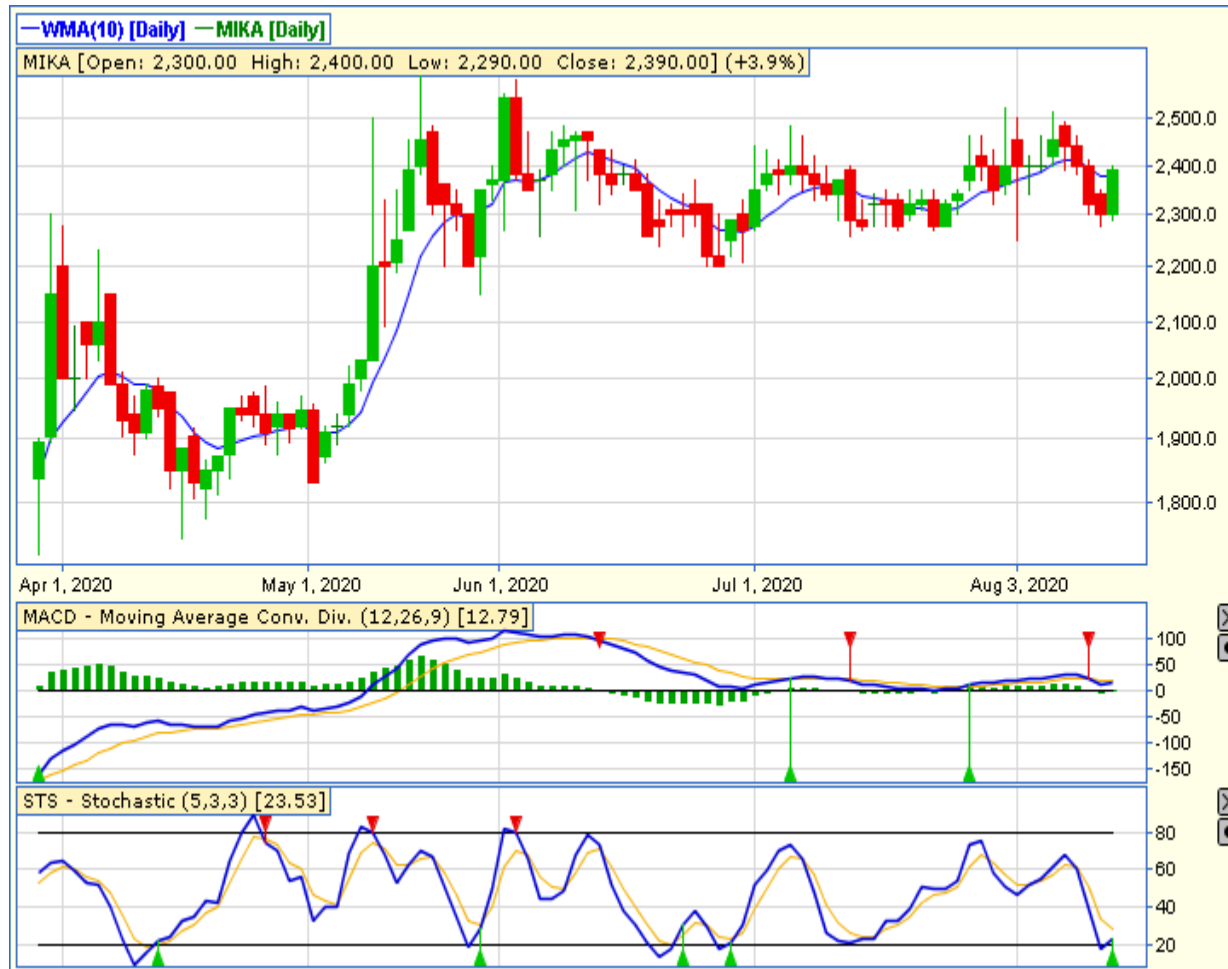
STOPLOSS < 318

BREAK OUT TRIANGLE

STOCHASTIC : NETRAL DI MIDDLE AREA

MACD : HISTOGRAM NEGATIF MENGECIL DAN
BERSIAP GOLDEN CROSS

TECHNICAL RECOMENDATION



MIKA – PT MITRA KELUARGA KARYASEHAT TBK

CLOSING 13/8/2020 Rp 2390 (+3.9%)

**SELL ON STRENGTH
TAKE PROFIT 2440**

**MORNING STAR
STOCHASTIC : OVERSOLD
MACD : HISTOGRAM NEGATIF MENGECIL DAN
BERSIAP GOLDEN CROSS**

TECHNICAL RECOMENDATION



ITMG – PT INDO TAMBANGRAYA MEGAH TBK

CLOSING 13/8/2020 RP 8175 (+0.6%)

BUY

TARGET PRICE 8675

STOPLOSS < 8075

INVERTED HAMMER

STOCHASTIC : DOWNTREND

MACD : HISTOGRAM POSITIF DAN UPTREND

TECHNICAL RECOMENDATION



EXCL – PT XL AXIATA TBK

CLOSING 13/8/2020 RP 2610 (+7.4%)

**SELL ON STRENGTH
TAKE PROFIT 2730**

**MORNING DOJI STAR
STOCHASTIC : GOLDEN CROSS
MACD : HISTOGRAM NEGATIF MENGECEIL DAN
BERSIAP GOLDEN CROSS**

RESEARCH TEAM



YULIANA

**RESEARCH ANALYST &
CORPORATE FINANCE**



DIMAS WP PRATAMA, CSA

TECHNICAL ANALYST

EQUITY CAPITAL MARKET TEAM



JESSIE JAMES

HEAD OF EQUITY SALES



PRASETYO NUGROHO

HEAD OF DEALING ROOM



GABRIELLA PRATIWY

HEAD OF ONLINE TRADING